

ASH LAWN

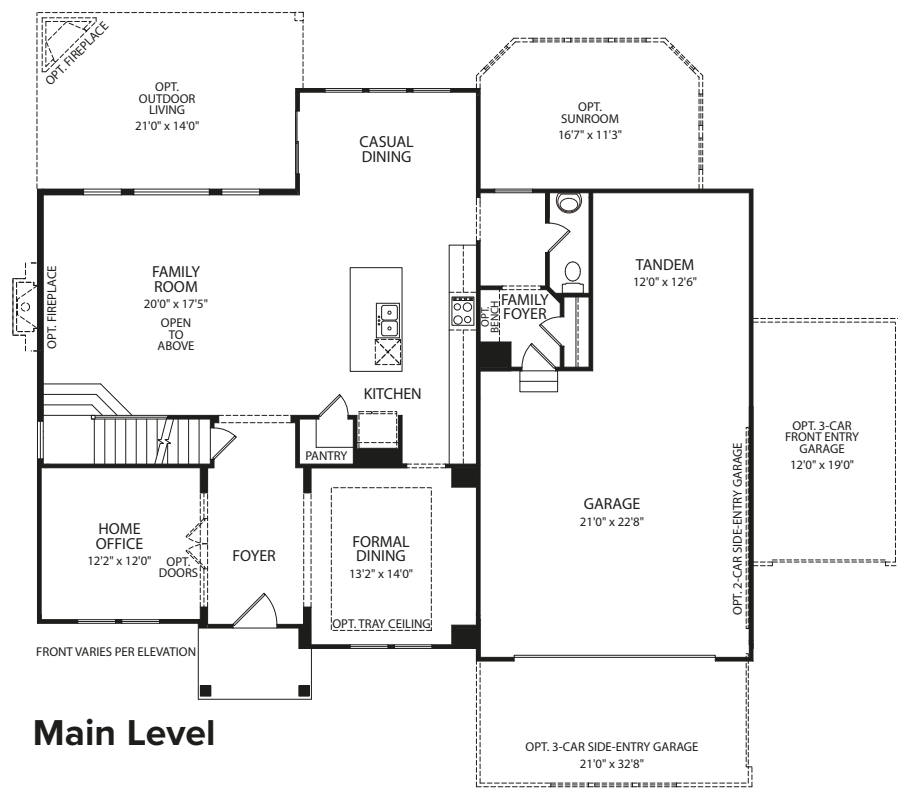


ASH LAWN E

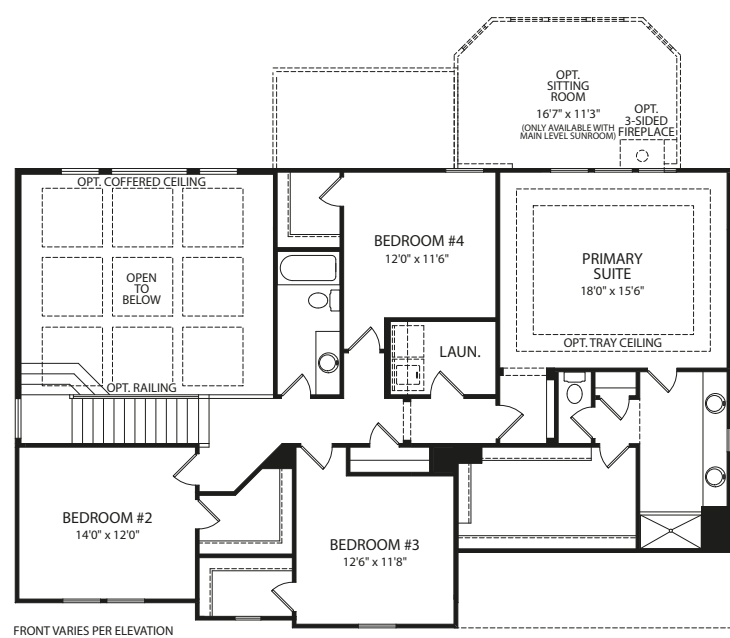
Illustrations show optional items and materials that vary based on availability and community requirements.

ASH LAWN

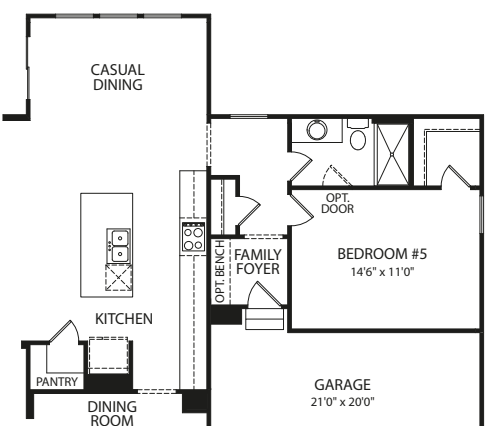
BY DREES HOMES



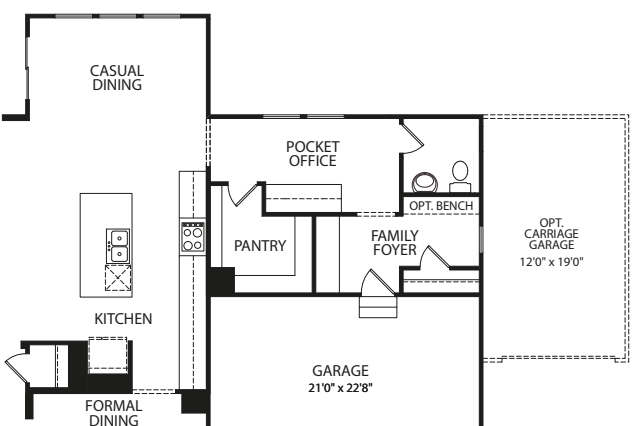
Main Level



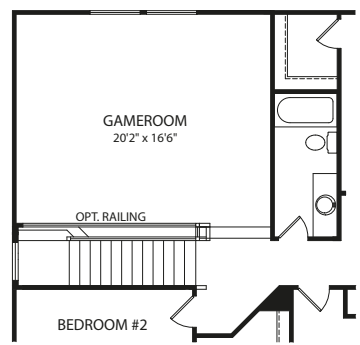
Second Level



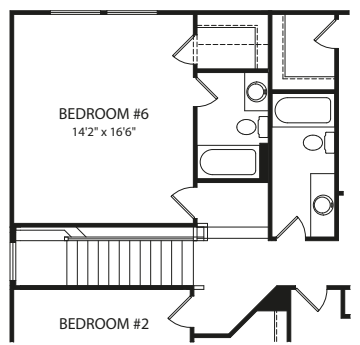
Optional Bedroom #5 and Full Bath



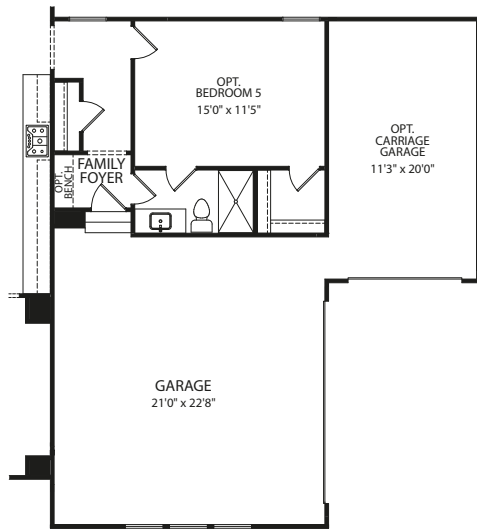
Optional Pocket Office



Optional Gameroom

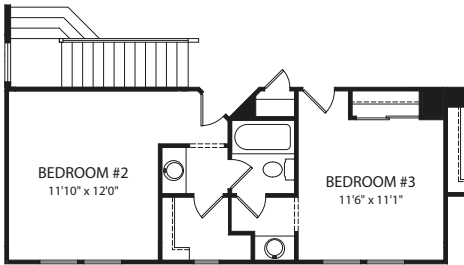


Optional Bedroom #6 and Full Bath



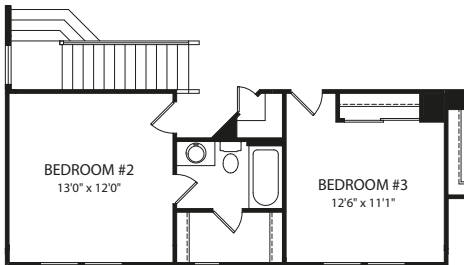
FRONT VARIES PER ELEVATION

Optional Side-Entry Garage with Optional Carriage Garage and Optional Bedroom 5



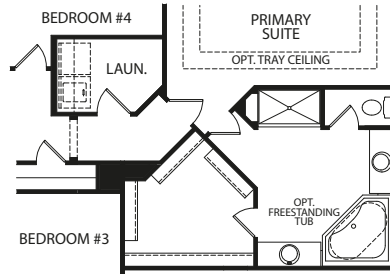
FRONT VARIES PER ELEVATION

Optional Jack and Jill Bath



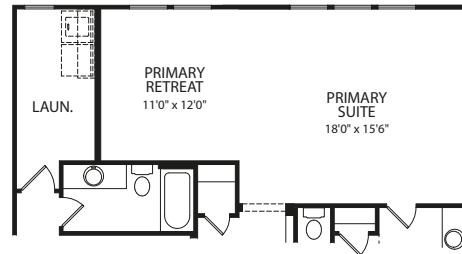
FRONT VARIES PER ELEVATION

Optional Bath at Bedroom #2

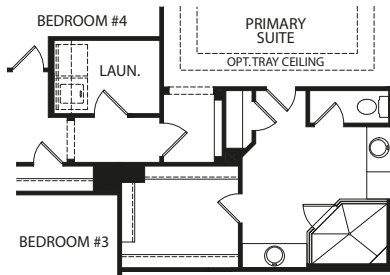


FRONT VARIES PER ELEVATION

Optional Garden Bath

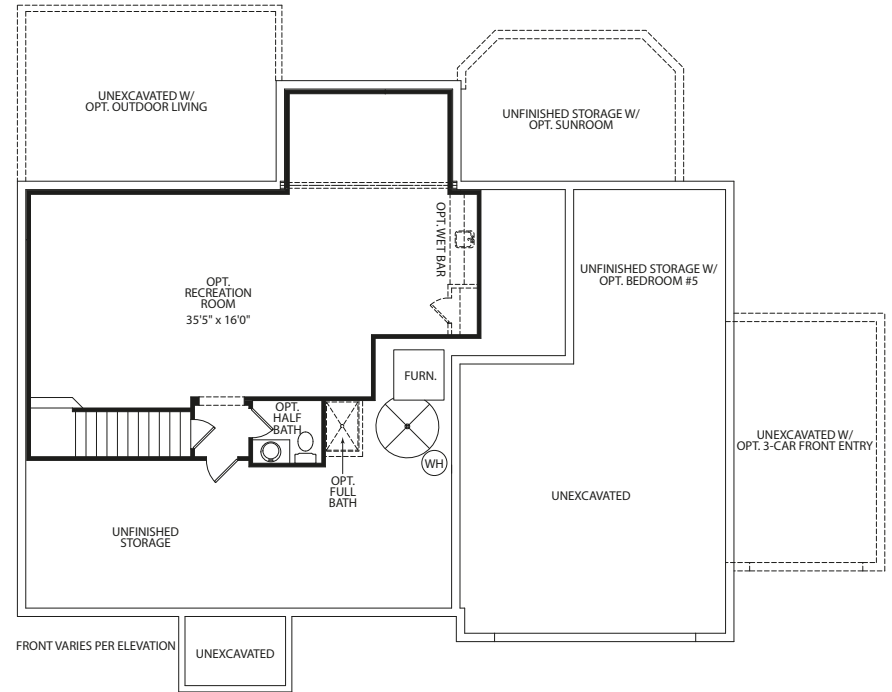


Optional Primary Retreat



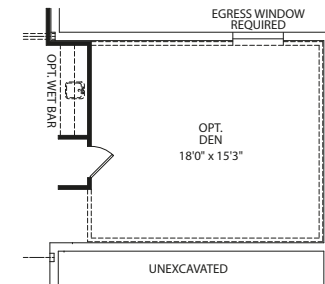
FRONT VARIES PER ELEVATION

Optional Super Shower



FRONT VARIES PER ELEVATION

Optional Lower Level



Optional Finished Lower Level with Optional Den
(Optional Den only available with Optional Bedroom #5)

Note: The elevations and floor plans in this brochure show optional items and materials that vary by availability and community. Room sizes may vary due to elevation and siding material selected. Because we are constantly improving our product, we reserve the right to change product features, brand names, dimensions, architectural details and design. This brochure and exterior colors shown here are for illustrative purposes only. They are not meant to represent actual product selections and may not be representative of available colors in specific communities. This is not part of a legal contract.



ASH LAWN B



ASH LAWN C



ASH LAWN D



ASH LAWN F



ASH LAWN G

Illustrations show optional items and materials that vary based on availability and community requirements.



dreeshomes.com

©2013, The Drees Company. All Rights Reserved. No portion of this material may be reproduced in any form or by any means, including photocopying, without the express written permission of The Drees Company. The Drees Company will vigorously prosecute any unauthorized use of this material.

Re-Order# B252393-OHCN 2/25

