

GRANDVIEW



GRANDVIEW C

Illustrations show optional items and materials that vary based on availability and community requirements.

BY DREES CUSTOM HOMES



GAMEROOM
15'0" x 16'0"

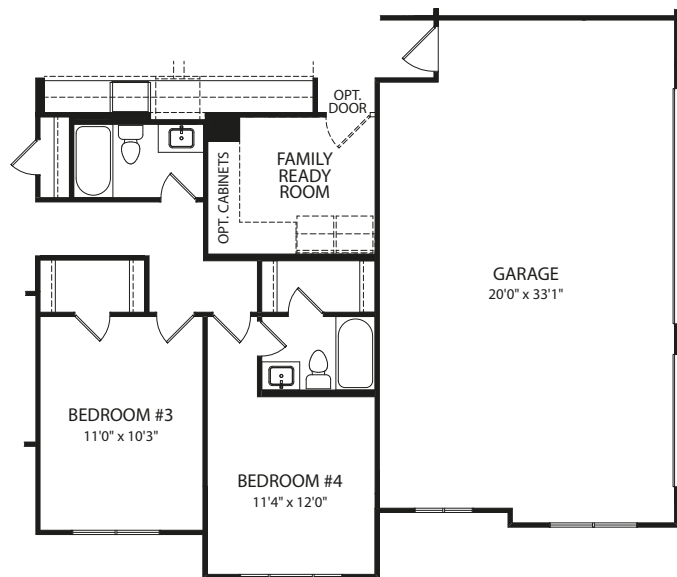
MEDIA ROOM
16'0" x 14'10"

OPT. CABINETS

The floor plan shows two rooms: a Home Office and Bedroom #5. The Home Office is located at the top and has a size of 11'0" x 11'7". It features a large window with a decorative arch. Bedroom #5 is located below the Home Office and has a size of 11'0" x 10'6". It also has a large window with a decorative arch. The rooms are separated by a wall, and there is a small hallway area between them.

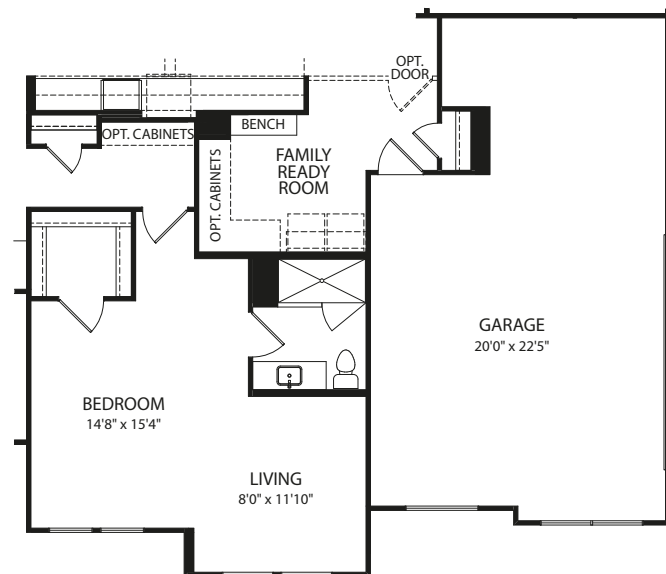
FRONT VARIES PER ELEVATION

Optional Bedroom #5 vs. Courtyard



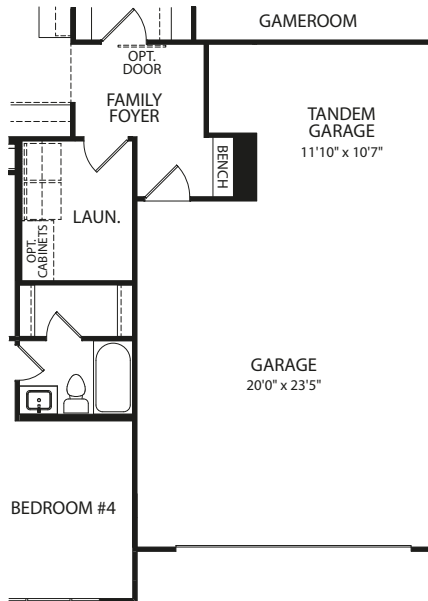
FRONT VARIES PER ELEVATION

Optional Family Ready Room



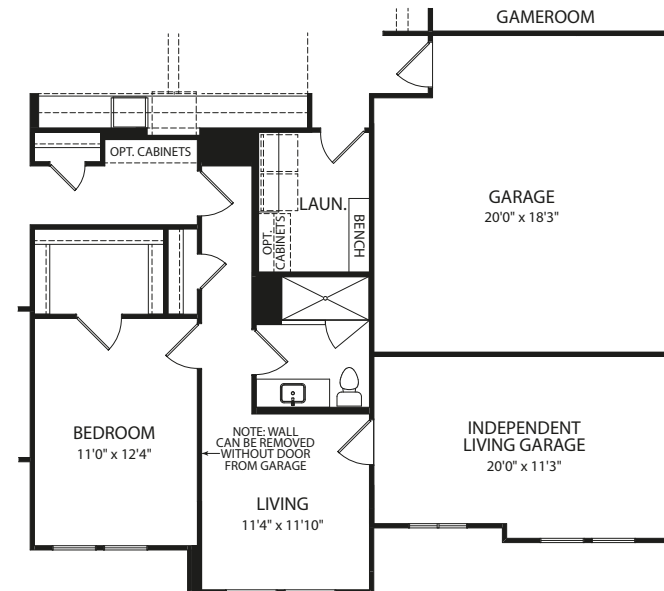
FRONT VARIES PER ELEVATION

Optional Family Ready Room with Optional Independent Living Suite



FRONT VARIES PER ELEVATION

Optional 2-Car Front-Entry with Tandem Garage



FRONT VARIES PER ELEVATION

Optional Independent Living Suite

Note: The elevations and floor plans in this brochure show optional items and materials that vary by availability and community. Room sizes may vary due to elevation and siding material selected. Because we are constantly improving our product, we reserve the right to change product features, brand names, dimensions, architectural details and design. This brochure and exterior colors shown here are for illustrative purposes only. They are not meant to represent actual product selections and may not be representative of available colors in specific communities. This is not part of a legal contract.



GRANDVIEW A



GRANDVIEW B



GRANDVIEW D

Illustrations show optional items and materials that vary based on availability and community requirements.

NEW FROM THE ARCHITECT

GRANDVIEW



Illustrations show optional items and materials that vary based on availability and community requirements.

GRANDVIEW F