

LYNDHURST

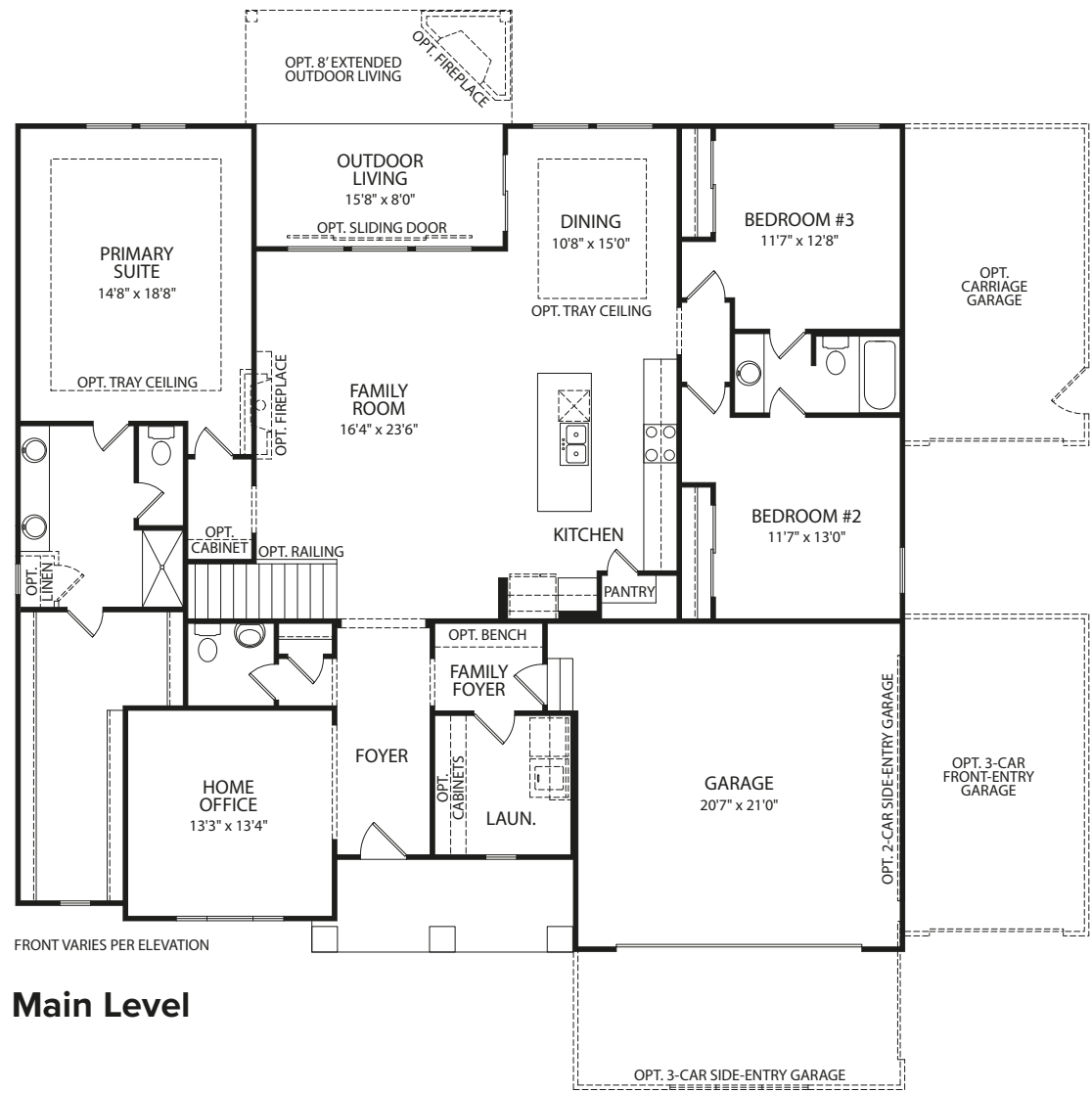


Illustrations show optional items and materials that vary based on availability and community requirements.

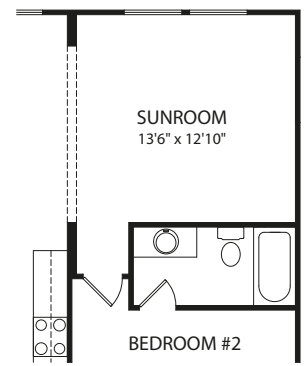
LYNDHURST C

LYNDHURST

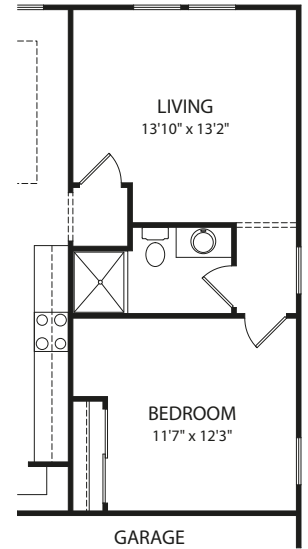
BY DREES HOMES



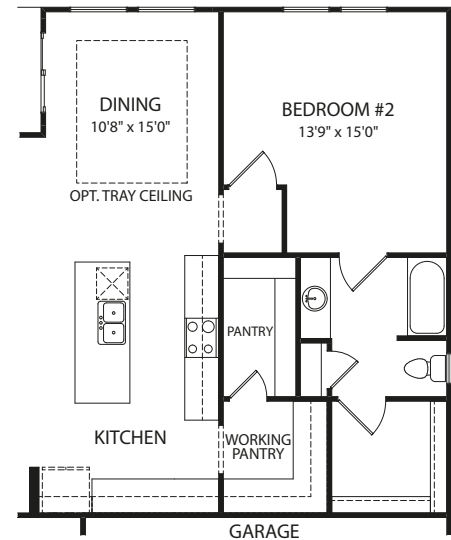
Main Level



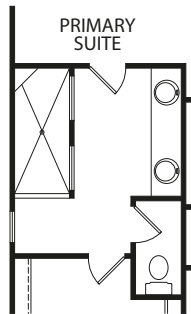
Optional Sunroom vs. Bedroom #3



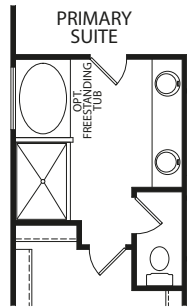
Optional Independent Living Suite



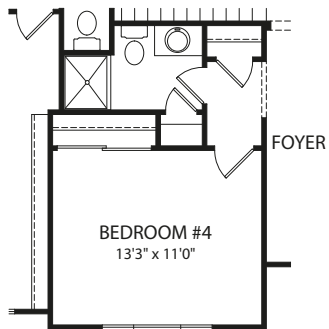
Optional Working Pantry



Optional Super Shower

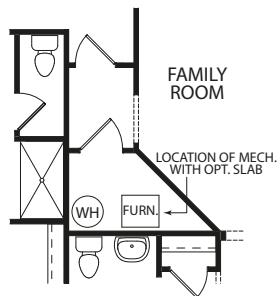


Optional Garden Bath

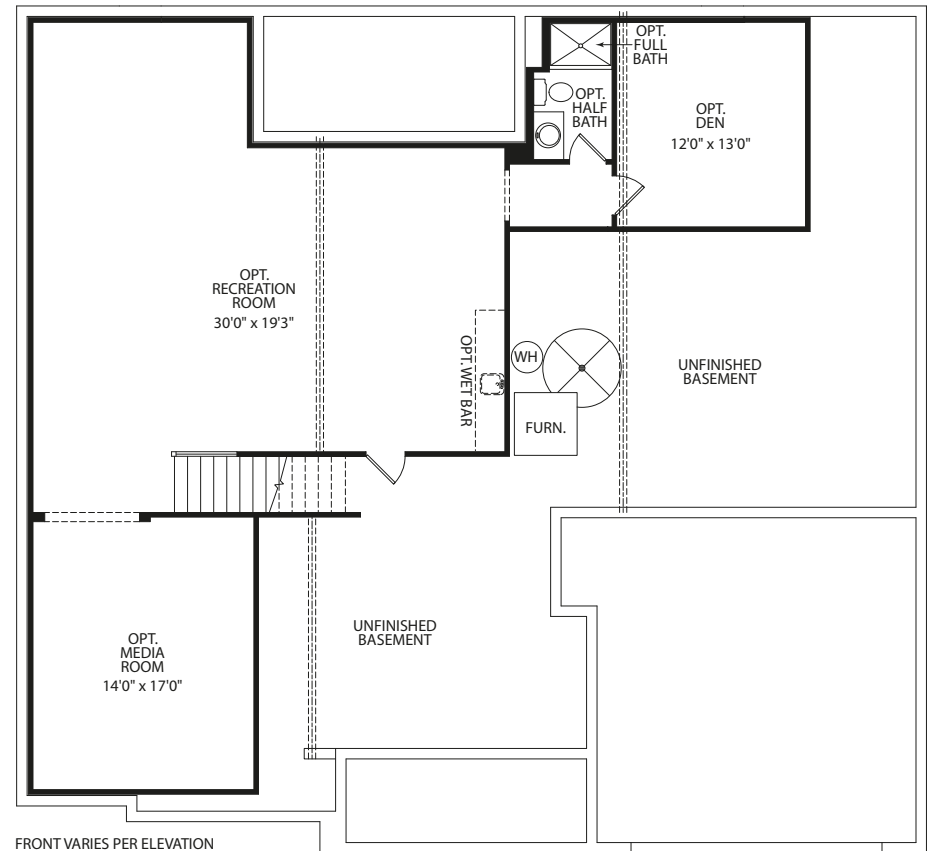


FRONT VARIES PER ELEVATION

Optional Bedroom #4 vs. Study



Optional Slab on Grade vs. Basement



FRONT VARIES PER ELEVATION

Optional Finished Lower Level

Note: The elevations and floor plans in this brochure show optional items and materials that vary by availability and community. Room sizes may vary due to elevation and siding material selected. Because we are constantly improving our product, we reserve the right to change product features, brand names, dimensions, architectural details and design. This brochure and exterior colors shown here are for illustrative purposes only. They are not meant to represent actual product selections and may not be representative of available colors in specific communities. This is not part of a legal contract.



Illustrations show optional items and materials that vary based on availability and community requirements.



dreeshomes.com

©2013, The Drees Company. All Rights Reserved. No portion of this material may be reproduced in any form or by any means, including photocopying, without the express written permission of The Drees Company. The Drees Company will vigorously prosecute any unauthorized use of this material.

Re-Order# B250066-OHCL 6/24



Lyndhurst

New from the Architect

Lyndhurst D



Lyndhurst G



Lyndhurst H



Lyndhurst J



Illustrations show optional items and materials that vary based on availability and community requirements.



www.dreeshomes.com

© 2016 The Drees Company. All Rights Reserved. No portion of this material may be reproduced in any form or by any means, including photocopying, without the express written permission of The Drees Company. The Drees Company will vigorously prosecute any unauthorized use of this material.

03/29/23 OHCL-TEMPORARY

