

NEW FROM THE ARCHITECT

# KAITLYN

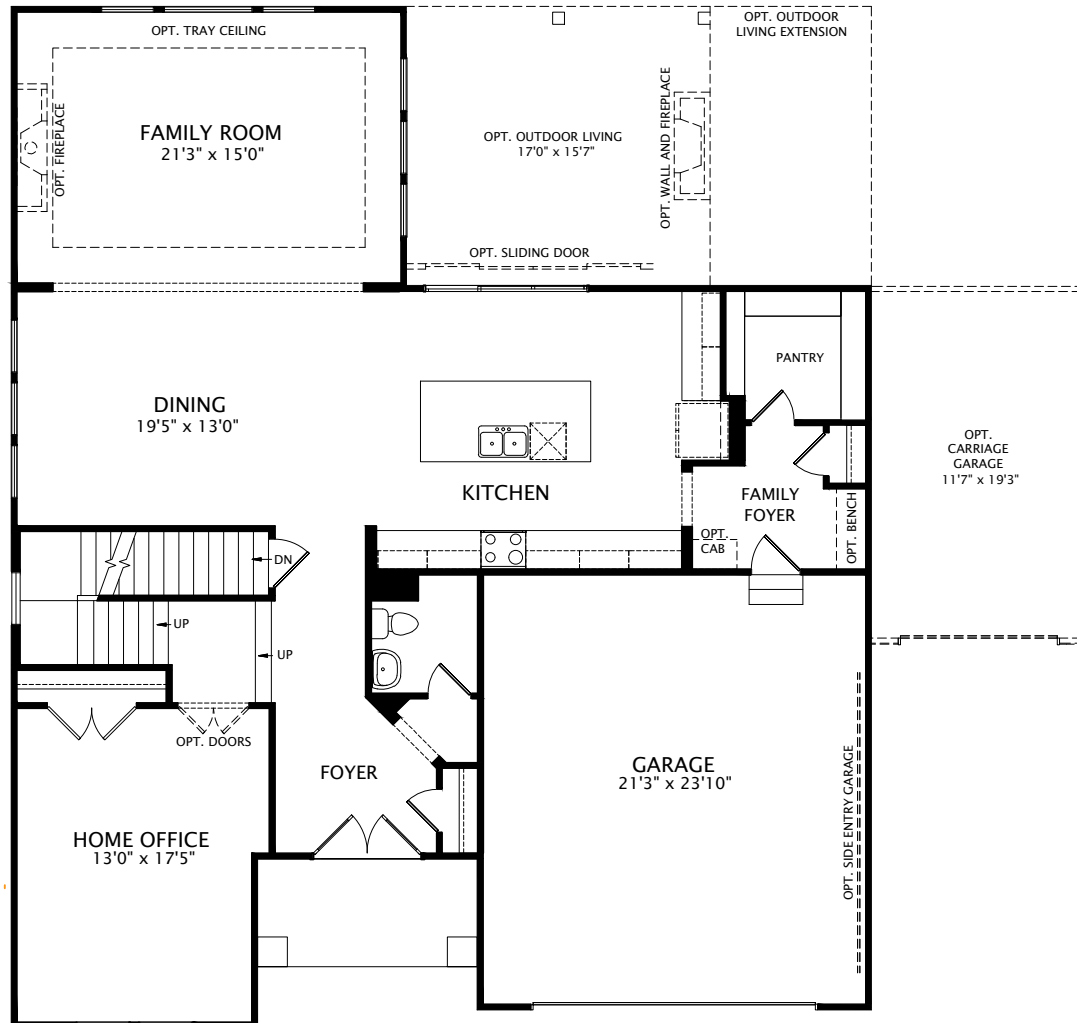


Illustrations show optional items and materials that vary based on availability and community requirements.

KAITLYN A

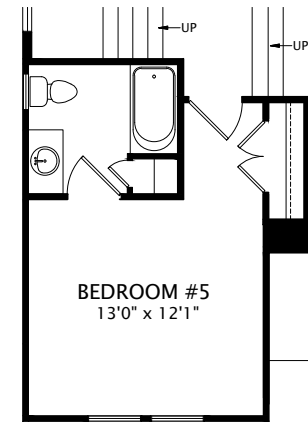
# KAITLYN

by Drees Homes

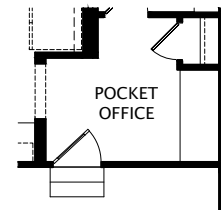


## Main Level

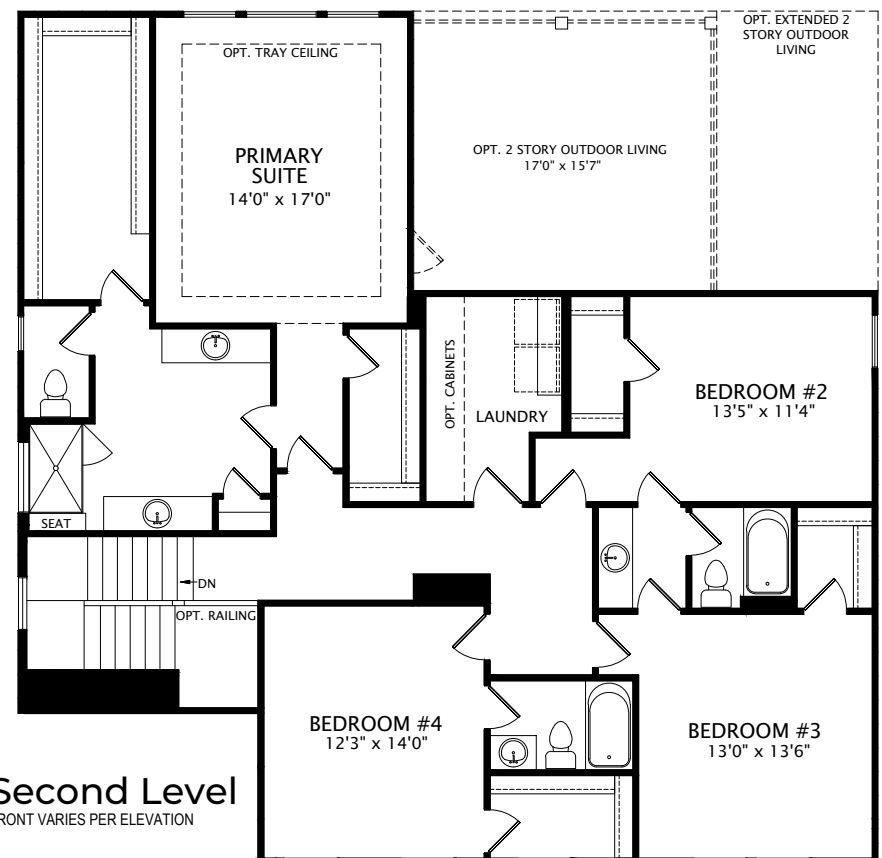
FRONT VARIES PER ELEVATION



## Optional Bedroom #5 vs. Home Office

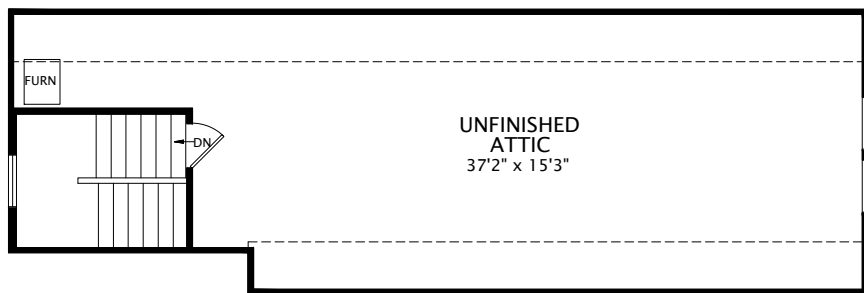


## Optional Pocket Office

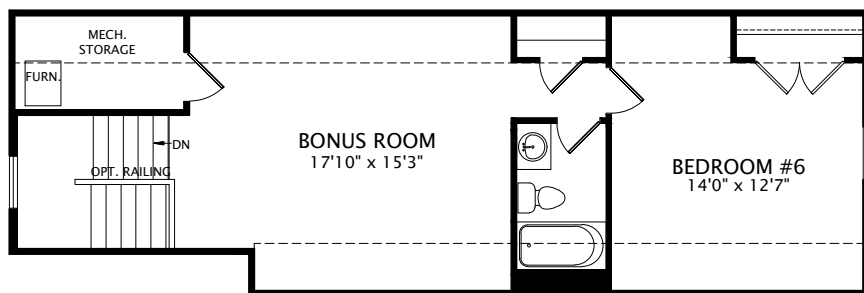


## Second Level

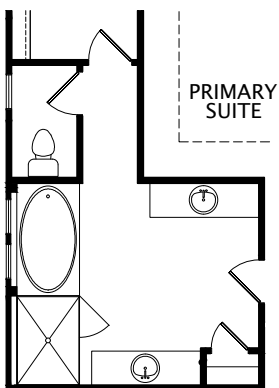
FRONT VARIES PER ELEVATION



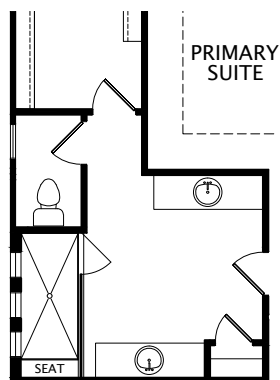
Optional Third Floor



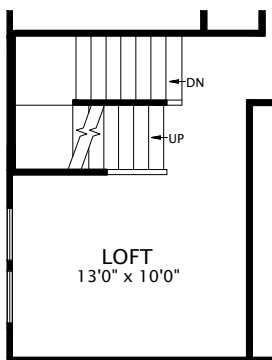
Optional Third Floor with Optional Bonus Room and Optional Bedroom #6



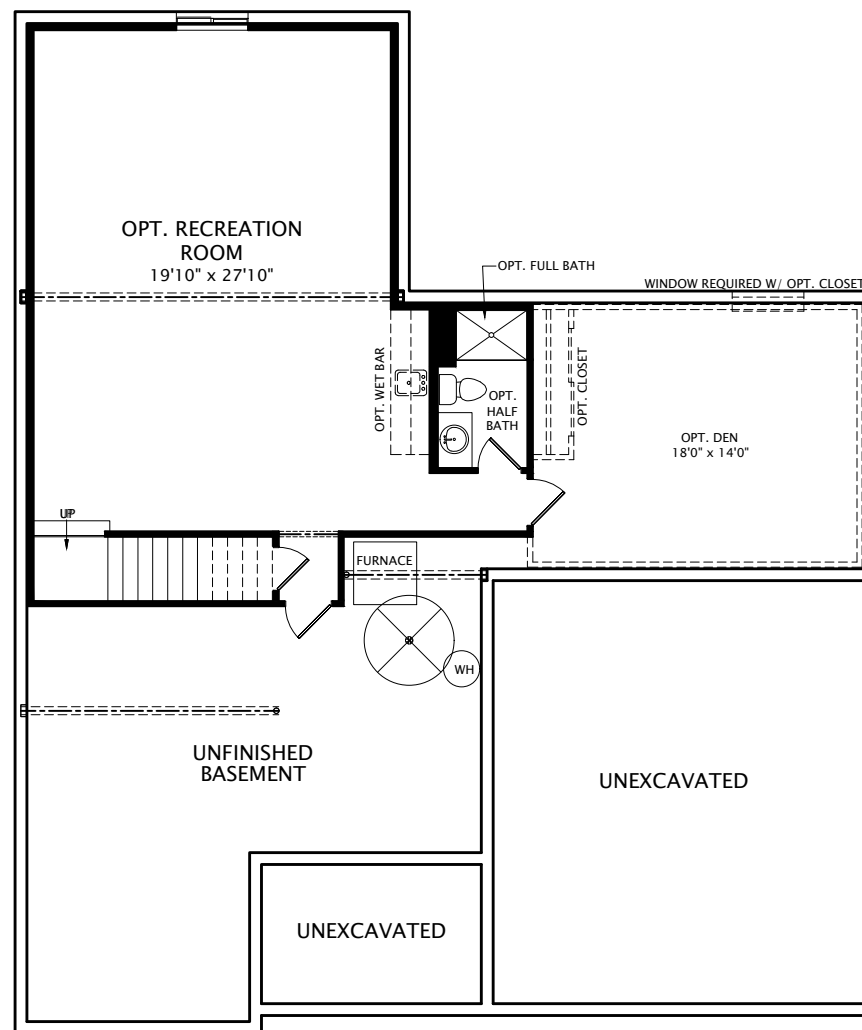
Optional Garden Bath



Optional Super Shower



Second Level with  
Optional Third Floor



Optional Finished Lower Level

FRONT VARIES PER ELEVATION

*Note:* The elevations and floor plans in this brochure show optional items and materials that vary by availability and community. Not all plans and elevations are available in all communities. Room sizes may vary due to elevation and siding material selected. The elevations and floor plans in this brochure show optional items. Because we are constantly improving our product, we reserve the right to change product features, brand names, dimensions, architectural details and design. This brochure and exterior colors shown here are for illustrative purposes only. They are not meant to represent actual product selections and may not be representative of available colors in specific communities. This is not part of a legal contract.

Copyright © 2019 The Drees Company. All Rights Reserved.





KAITLYN B



KAITLYN C

Illustrations show optional items and materials that vary based on availability and community requirements.



[www.dreeshomes.com](http://www.dreeshomes.com)

© 2019 The Drees Company. All Rights Reserved. No portion of this material may be reproduced in any form or by any means, including photocopying, without the express written permission of The Drees Company. The Drees Company will vigorously prosecute any unauthorized use of this material.

12/11/24 WDC - TEMPORARY

