

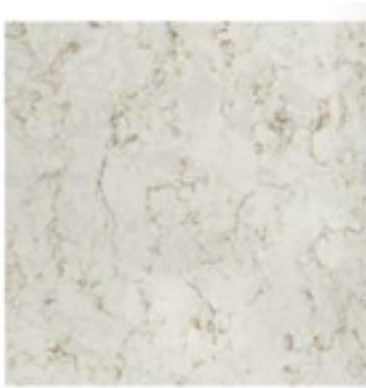
NEW Traditional



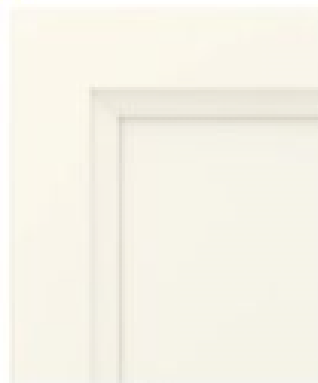
Seagull
PPG14-03



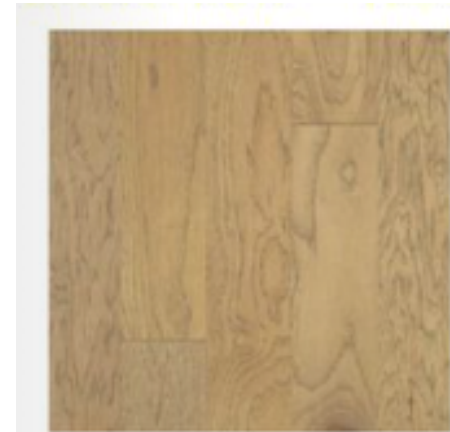
Delicate White
PPG1001-1



Silestone
Lusso



Alpine



Burlap

KITCHEN & MAIN LIVING AREAS

Kitchen Cabinets: Homecrest, Level 4, Full Overlay, Bexley painted Alpine

Kitchen Cabinet Hardware: Richelieu, 65096-Champagne Bronze

Kitchen Countertops: Silestone Level 5, Lusso

Kitchen Backsplash: 3 x 8 horizontally stacked Passion Blanco, bright white

Kitchen Faucet: Moen Align, Brushed Gold

Kitchen Pendants: Kichler, 42046, Natural Brass

Main Flooring: Mohawk Laminate, Level 3, Western Row, Burlap

Wall Color Throughout: PPG, Seagull

Trim Color Throughout: PPG, Delicate White

(Reference specific home selections for applicable items and specific material locations.)

KCH1224



Photos in this document are provided for representation only and variations may exist in actual color. The items featured are subject to change at any time and do not encompass all items selected for home. Drees Homes reserves the right to substitute materials, finishes, and/or equipment without notice.

NEW Traditional



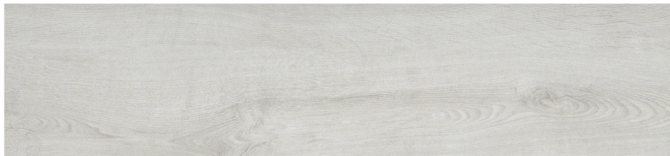
8" Spread



Fallow



Harvey Two
Vintage Black



MASTER BATH

Cabinet Selection: Homecrest Level 3, Bexley stained Fallow

Cabinet Hardware: Richelieu, 65096-900

Countertops: Silestone Level 3, Palisades GoldF

Faucets: Moen Gibson 8" in Matte Black

Bath Vanity Light: Kichler 45886BK black

Tile Flooring: Level 5, 8x35 Mozukai, Hakari

Wall Tile : Level 4, Famed 12x24, FM10

Shower Pan Tile (if applicable): Affair Penny Round, 100

(Reference specific home selections for applicable items and specific material locations.)



Photos in this document are provided for representation only and variations may exist in actual color. The items featured are subject to change at any time and do not encompass all items selected for home. Drees Homes reserves the right to substitute materials, finishes, and/or equipment without notice.

NEW Traditional



Alpine



BATH 2 AND 3

Cabinet Selection: Level 2, Kenosha Painted Alpine

Cabinet Hardware: Richelieu 65096-900

Countertops: Silestone Level 1, Bianco Carrara

Bath Faucets: Moen Gibson 4" in Matte Black

Bath Vanity Light: Kichler Winslow in Matte Black

Tile Flooring: Level 4, 6x24 Wanderwise, Swan

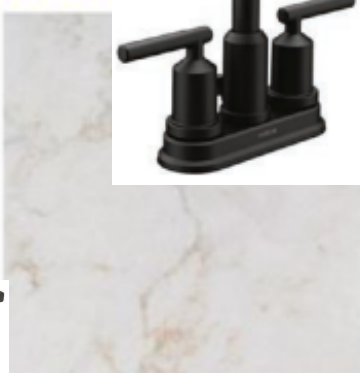
Wall Tile : Level 3, 12x24 Artsy, Studio

(Reference specific home selections for applicable items and specific material locations.)



Photos in this document are provided for representation only and variations may exist in actual color. The items featured are subject to change at any time and do not encompass all items selected for home. Drees Homes reserves the right to substitute materials, finishes, and/or equipment without notice.

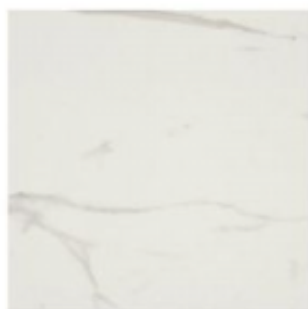
NEW Traditional



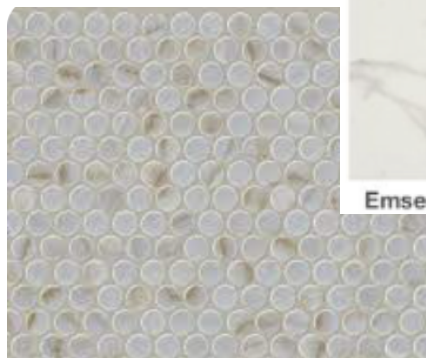
Topzstone
Palasides Gold



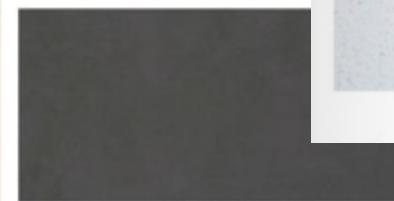
Alpine



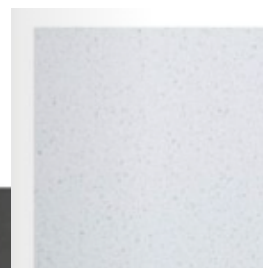
Emser Contessa – 13x13



Fallow



Emser Chiado II – 12x24
Loring



Topzstone
Sugar

BATH 4

Cabinet Selection: Level 2, Homecrest, Kenosha painted Alpine

Cabinet Hardware: Richelieu, 65096-900

Countertops: Silestone Level 3, Palisades Gold

Bath Faucets: Moen Gibson 4" in Matte Black

Bath Vanity Light: Kichler 45886 Matte Black

Tile Flooring: Level 4, 6x24 Wanderwise, Swan

Wall Tile: Level 3, 12x12 Contessa

Shower Pan: Affair Penny, 100

(Reference specific home selections for applicable items and specific material locations.)

LAUNDRY

Tile Flooring: 12x24 Chiado

Countertops: Silestone Level 1, Sugar

Backsplash: 4" Mesmerist, White

Cabinet Hardware: Richelieu, 65096-900

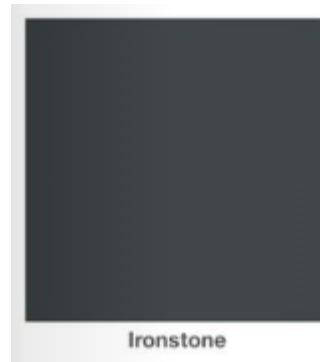
Faucet: Matte Black

Cabinet Selection: Level 1, Kenosha Stained Fallow



Photos in this document are provided for representation only and variations may exist in actual color. The items featured are subject to change at any time and do not encompass all items selected for home. Drees Homes reserves the right to substitute materials, finishes, and/or equipment without notice.

EXTERIOR



Brick: Hayden

Roof: Charcoal

Fascia/Soffit: Vinyl, Ironstone

Exterior Siding: Board and Batten painted Linen

Exterior Accents: Columns, Shutters and Gable accents
stained Cinder

Faux Stone: Plain Georgetown

Gutters: Black

*(Reference specific home selections for applicable items and
specific material locations.)*



Cinder



Black



Linen



Walmac



Plain



Photos in this document are provided for representation only and variations may exist in actual color. The items featured are subject to change at any time and do not encompass all items selected for home. Drees Homes reserves the right to substitute materials, finishes, and/or equipment without notice.