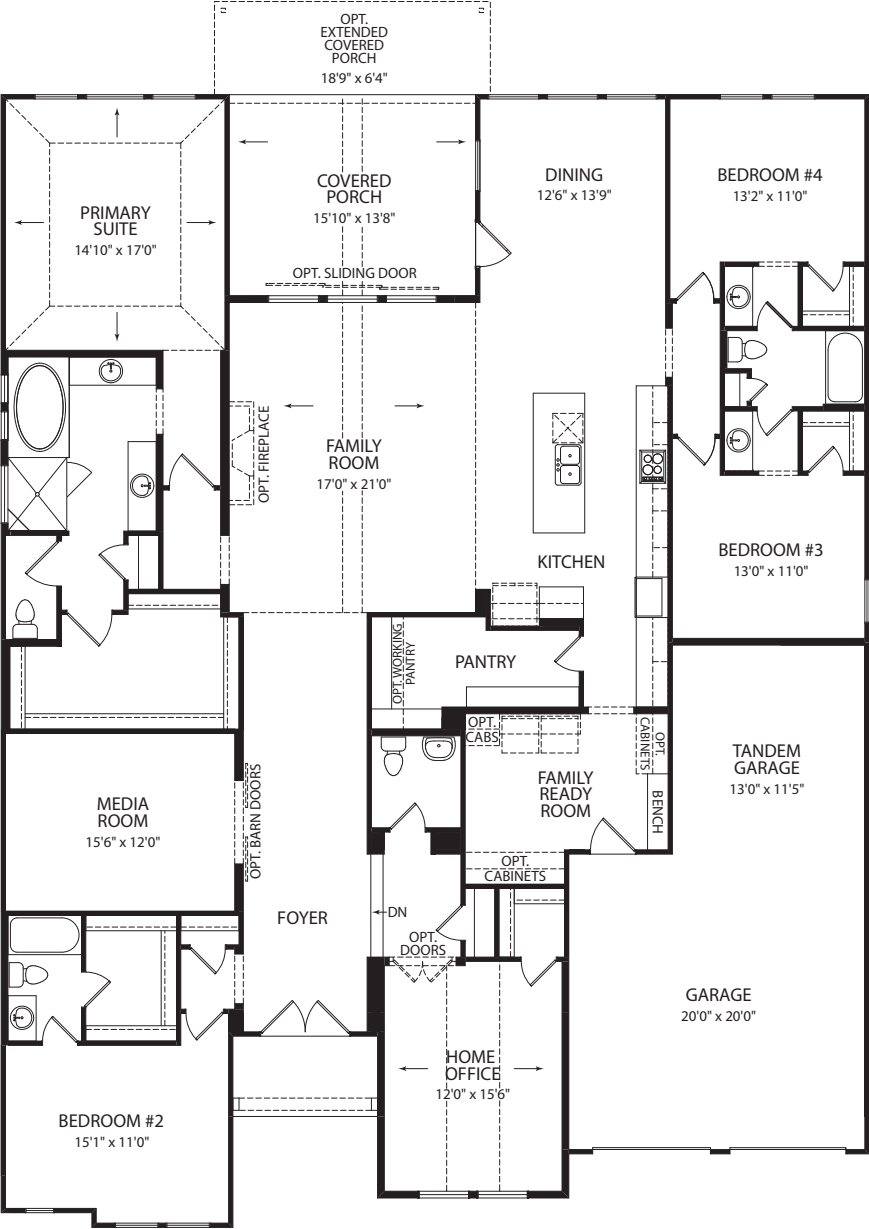


EASTLAND II



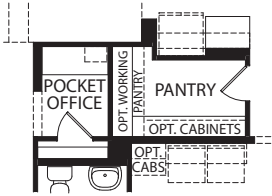
EASTLAND II A

Illustrations show optional items and materials that vary based on availability and community requirements.

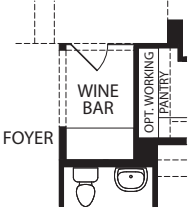


FRONT VARIES PER ELEVATION

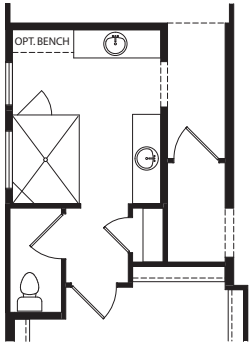
Main Level



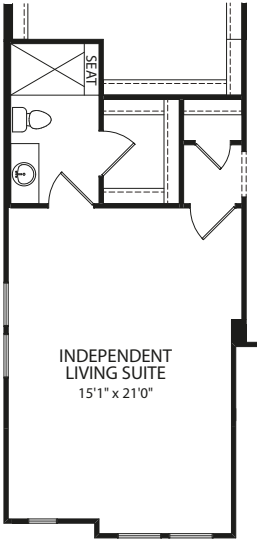
Optional Pocket Office



Optional Wine Bar

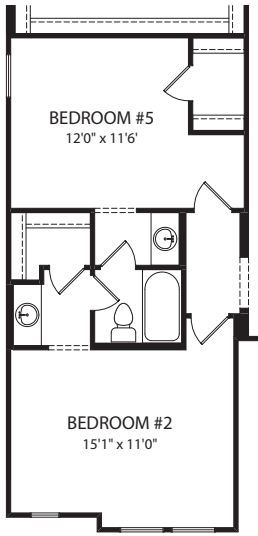


Optional Primary Suite Bathroom



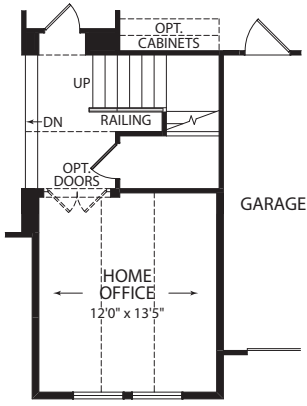
FRONT VARIES PER ELEVATION

Optional Independent Living Suite



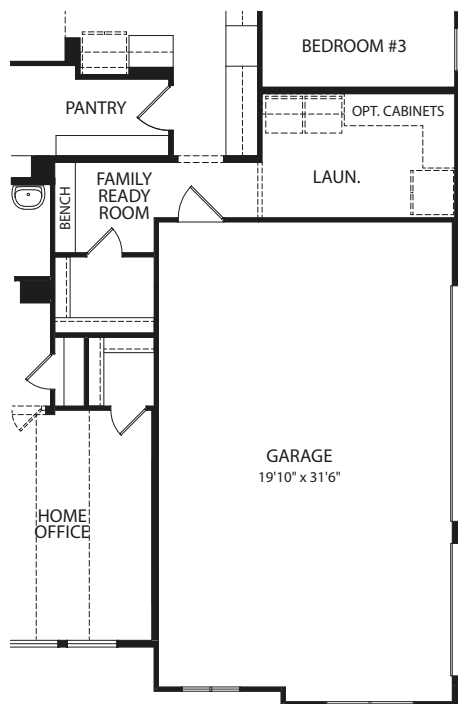
FRONT VARIES PER ELEVATION

Optional Bedroom #5 vs Media Room



FRONT VARIES PER ELEVATION

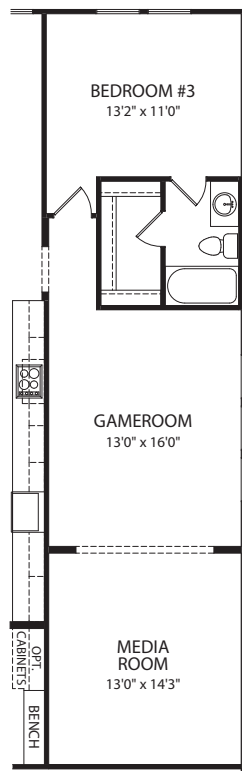
Main Level with Optional Second Level



FRONT VARIES PER ELEVATION

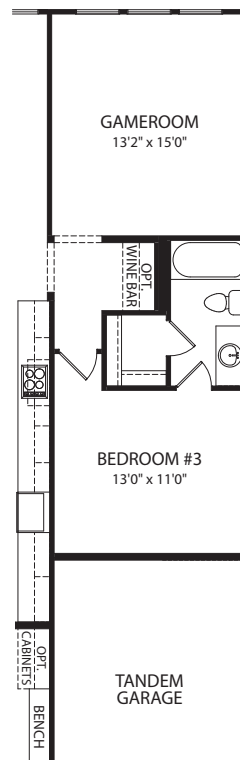
Optional 3-Car Side-Entry Garage

(Not available with Optional Gameroom and Media Room with Bedroom #4)

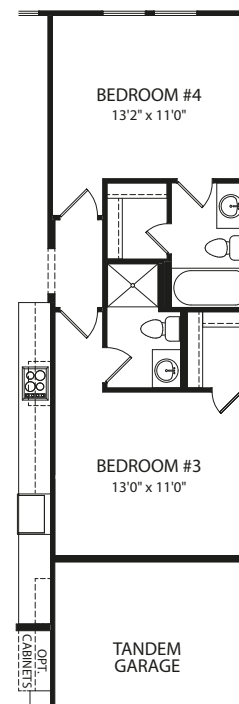


Optional Gameroom and Media Room with Bedroom #4

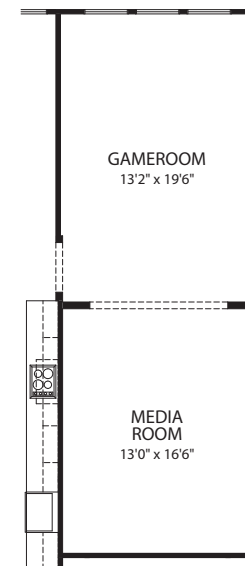
(Not available with Optional 3-Car Side-Entry Garage)



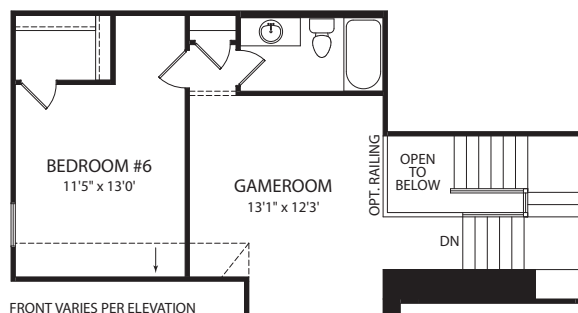
Optional Gameroom vs Bedroom #4



Optional Private Baths for Bedroom #3 and #4

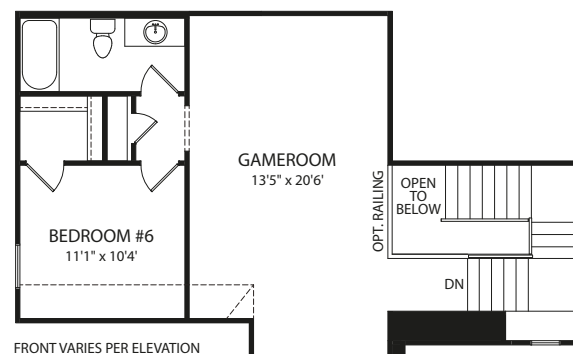


Optional Gameroom and Media Room vs Bedrooms



FRONT VARIES PER ELEVATION

Optional Second Level



FRONT VARIES PER ELEVATION

Optional Alternate Second Level

Note: The elevations and floor plans in this brochure show optional items and materials that vary by availability and community. Room sizes may vary due to elevation and siding material selected. Because we are constantly improving our product, we reserve the right to change product features, brand names, dimensions, architectural details and design. This brochure and exterior colors shown here are for illustrative purposes only. They are not meant to represent actual product selections and may not be representative of available colors in specific communities. This is not part of a legal contract.



Illustrations show optional items and materials that vary based on availability and community requirements.



dreeshomes.com

©2020, The Drees Company. All Rights Reserved. No portion of this material may be reproduced in any form or by any means, including photocopying, without the express written permission of The Drees Company. The Drees Company will vigorously prosecute any unauthorized use of this material.

Re-Order# B251779-TXD 12/24

